

CQ

20/25/30

IC-PNEUMATIC LPG/DIESEL
4000 / 5000 / 6000 lbs.
(2000 / 2500 / 3000 kg)



CLARK[®]
THE FORKLIFT



- With four and one half turns lock-to-lock the **hydrostatic power steering** provides the operator with excellent maneuverability and ease of control.

- The spacious **operator compartment** is supported on rubber isolators which reduce engine noise and vibration transmitted to the operator.



Highly Maneuverable, Easily Serviceable, Extremely Dependable

The CQ20-Series proudly adds to CLARK's unique history of building dependable forklifts. No frills design with proven, long lasting components **provide long life and simplified maintenance** in distribution, manufacturing and warehousing of all types, indoors or out.

55%

I-Beam style upright rails are designed to be fifty-five percent stiffer than conventional flat-faced rails. This means better resistance to side-to-side deflection which results in longer component life and improved truck stability with elevated loads.

- Nested upright rails provide positive rail interlock and a narrow “column” to **maximize the vision window**. The overhead guard safety bars run parallel to the operator’s line of sight resulting in a **clear, unobstructed view**.

Maximum Visibility + Minimum Fatigue =
Ultimate Safety & Product Integrity



CQ20 STANDARD FEATURES & BENEFITS



PARKING BRAKE

■ Simple & Error Proof

- Hand operated parking brake can be easily released and adjusted at the handle.
- Transmission disengages when parking brake is set preventing driving against brakes.

HYDRAULIC SYSTEM

■ Maximum Horsepower

- Uses a load-sensing flow control valve for steering to reduce horsepower loss and heat buildup.

■ Optimum Performance Of Attachments

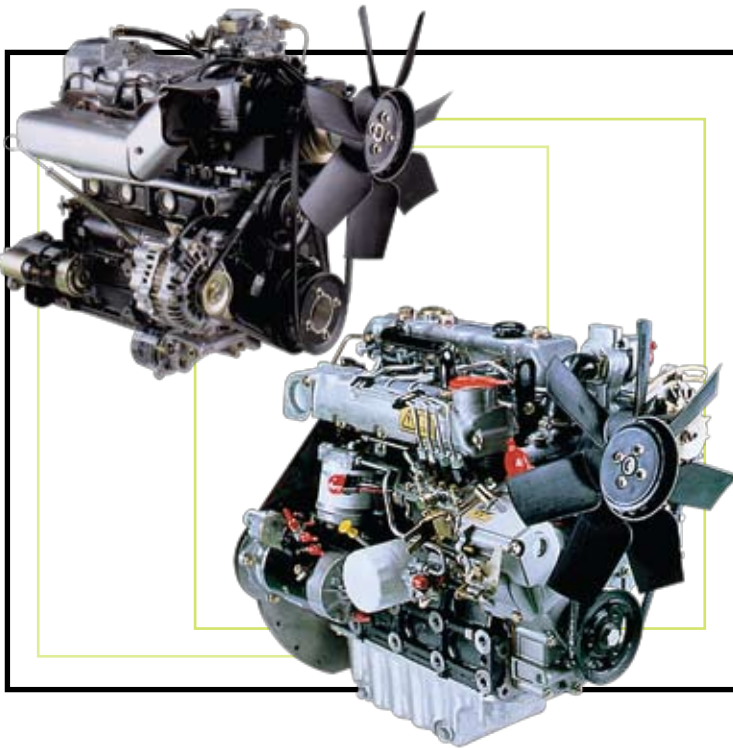
- The main hydraulic valve incorporates adjustable flow controls for tilt and auxiliary functions.

■ Sectional Design

- Allows for easy addition of extra functions and simplifies service.

■ Upright Mounted Load Lowering Valve

- Controlled lowering independent of engine speed.



THE POWER BEHIND THE PUNCH

■ Field-Proven Mitsubishi 4G64 LPG Engine

- The 4-cylinder, 48 HP, overhead cam engine with internal dynamic balancers provides smooth and quiet operation.
- Hydraulic valve lifters and electronic ignition reduce maintenance requirements.

■ Recognized Worldwide Yanmar Diesel Engine

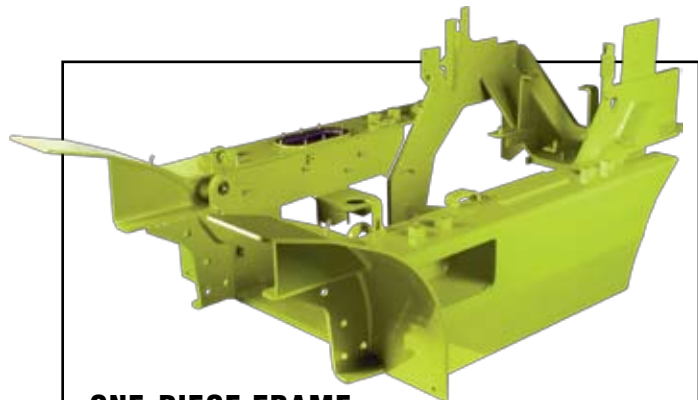
- Durable, easy to start, easy to service.
- Low-emission indirect injection = reduced noise level.
- Vertical exhaust is standard equipment.

■ EPA Compliant

- Mitsubishi engine produces only 10% of the allowable carbon monoxide.
- Yanmar engine meets low-emission requirements.

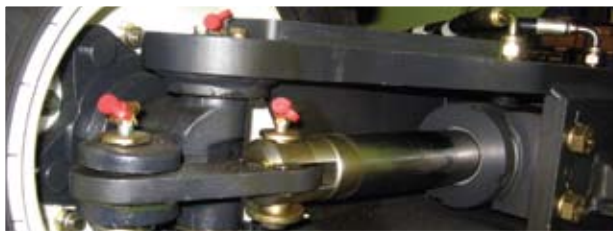
Available Equipment

- Double auxiliary valve
- Hose adaptations
- Hydraulic control options
- Side shifters
- Strobe lights
- Rear work light
- Reverse Alarm
- Mirrors
- Suspension seat, vinyl & cloth
- U.L. Type LP and D constructions
- Diesel
- Various tire options



ONE-PIECE FRAME

- Heavy duty, welded, and formed steel plate design protects from impact damage and extends the life of the truck.



STEERING AXLE

■ Rugged Design

- Linkage pivot pins are “double shear” design to withstand impact without loosening or breaking.

■ Simple Axle Design

- Double-ended cylinder provides steering force.



RUGGED UPRIGHT AND CARRIAGE

■ Maximum Visibility

- Nested I-Channel allows space for cylinders, hoses and chains.

■ Hydraulic Cushioning Valves

- Silent staging reduces shock & vibration.

■ Shimmable, Sealed & Canted Load Rollers

- Carriage has 6 load rollers.
- Maximize load distribution & reduce free play.



TRANSAXLE

■ Integral Axle And Transmission

- No exposed seals or driveshafts to wear or collect debris.

■ Modulated Shift Protection

- Smooth engagement, cushioned shifting.

■ Common Sump

- Allows both axle and transmission lube to be cooled with the transmission cooling system.

■ Heavy Duty

- Torque converter, clutches and axle gearing extend life and minimize service requirements.

■ Inching Valve

- Left brake pedal operation allows for precisely controlled travel speeds during high speed lifting.

■ Service Access is Simple

- Seat deck raises for easy access to both sides of engine and floorboard is removable to reveal hydraulic & transmission components.



OPERATOR COMPARTMENT

■ CLARK Safety Seat

- 6" fore / aft adjustment
- Molded for support
- Non-cinching, retractable seat belt
- Weight adjustment and full-suspension available.

■ Thick Molded Floor Mat

- Reduces vibration and noise level.
- Improves operator comfort.

■ Cowl Mounted Hydraulic Controls

- Located and sized for ease of use.

■ Tilt Steering Column

- Adjusts to suit operator & provides easier entry/exit.

GENERAL DATA & STANDARD DIMENSIONS

Upright Table

Maximum Fork Height		Overall Height Lowered		Free Lift	Standard Tilt Spec B°/F°
in	mm	in	mm		
83	2120	62.6	1575	4.3	110
105	2680	73.6	1855	4.3	110
117	2980	79.5	2005	4.3	110
• 130	3300	85.8	2165	4.3	110
146	3725	97.2	2455	4.3	110
152	3860	100.2	2530	4.3	110
164	4165	110.8	2800	4.3	110
172	4380	118.7	3000	4.3	110
182	4620	127.8	3230	4.3	110
203	5170	138.2	3495	4.3	110

CQ 20/25/30 Standard

83	2120	62.6	1575	4.3	110	6/8
105	2680	73.6	1855	4.3	110	8/8
117	2980	79.5	2005	4.3	110	8/8
• 130	3300	85.8	2165	4.3	110	10/8
146	3725	97.2	2455	4.3	110	10/8
152	3860	100.2	2530	4.3	110	6/4
164	4165	110.8	2800	4.3	110	6/4
172	4380	118.7	3000	4.3	110	6/4
182	4620	127.8	3230	4.3	110	6/4
203	5170	138.2	3495	4.3	110	6/4

CQ 20/25/30 Triple Stage

152	3860	73.6	1855	46.5	1189	6/4
170	4320	79.5	2055	52.4	1339	6/4
• 189	4800	85.8	2165	58.7	1499	6/4
205	5210	91.3	2305	64.2	1639	6/4
217	5520	97.2	2455	70.1	1789	3/3
226	5740	100.2	2530	73.1	1864	3/3
240	6100	106.5	2690	79.4	2024	3/3
251	6370	110.8	2800	83.7	2134	3/3
269	6830	118.7	3000	91.6	2334	3/3
288	7315	127.2	3230	100.6	2564	3/3

CQ 20/25/30 Hi-Lo

115	2935	79.5	2005	52.4	1382	6/8
• 128	3255	85.8	2165	58.7	1542	6/8
139	3530	91.3	2305	64.2	1682	6/8

Note: For CQ30, add .59 in. (15 mm) to overall height lowered, for all upright types.

Grade Clearance

Model	A%	B%
CQ 20	71	24
CQ 25	53	24
CQ 30	57	22

• Indicates preferred common specification.

¹ For overall height raised with load backrest, add 48.5 in. (1233 mm) for Class II and 48.7 in. (1236 mm) for Class III to maximum fork height.

² Standard tilt shown. Contact Clark representative for information on optional tilt.

³ Freelift dimensions shown are without load backrest.

Other uprights available, contact a Clark representative.

Notes

Production engines and driveline components may vary in output and/or efficiency by ±5%. The performance shown represents nominal values which may be obtained under typical operating conditions of a machine.

ANSI/ITSDF and Insurance Classification

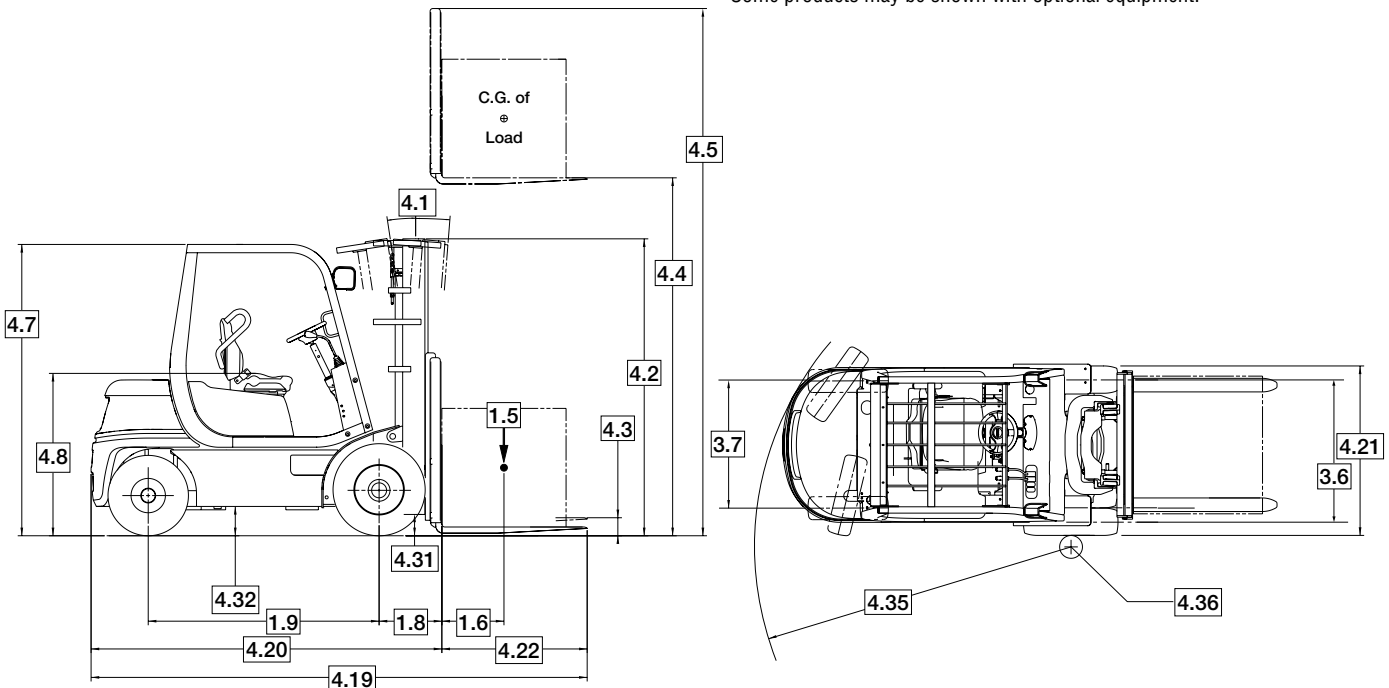
Standard truck meets all applicable mandatory requirements of Part III-ANSI/ITSDF B56.1 Safety Standard for Powered Industrial Trucks and Underwriters Laboratories requirements as to fire hazard only for D and LP classifications. For further information contact a Clark representative.

Users should be aware of, and adhere to, applicable codes and regulations regarding operator training, use, operation and maintenance of powered industrial trucks, including:

- ANSI/ITSDF B56.1
- NFPA 505, fire safety standard for powered industrial trucks - type designations, areas of use, maintenance and operation.
- Occupational Safety and Health Administration (OSHA) regulations that may apply.

Contact your authorized CLARK forklift truck dealer for further information including operator training programs and auxiliary visual and audible warning systems, fire extinguishers, etc., as available for specific user applications and requirements.

Specifications, equipment, technical data, photos and illustrations are based on information at time of printing and are subject to change without notice. Some products may be shown with optional equipment.

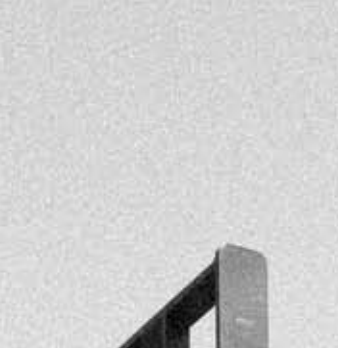


For corresponding data see Specification Chart

STANDARD SPECIFICATIONS

Specifications	1.1	Manufacturer		Clark	Clark
	1.2	Manufacturer's Designation		CQ20D	CQ25D
	1.3	Drive unit Diesel, L.P. Gas		Diesel	Diesel
	1.4	Operator type stand on / driver seated		Driver Seated	Driver Seated
	1.5	Load capacity / rated load	lbs(kg)	4000 (2000)	5000 (2500)
	1.6	Load center distance	in(mm)	24 (600)	24 (600)
	1.8	Load center distance, center of drive axle to fork face	in(mm)	17.8 (452)	17.8 (452)
	1.9	Wheelbase	in(mm)	63.8 (1620)	63.8 (1620)
Weight	2.1	Service weight	lbs(kg)	7725 (3504)	8375 (3799)
	2.2	Axle loading, loaded front / rear	lbs(kg)	10,635 / 1521 (4824 / 690)	12,352 / 1534 (5603 / 696)
	2.3	Axle loading, unloaded front / rear	lbs(kg)	3642 / 4083 (1652 / 1852)	3613 / 4762 (1639 / 2160)
Tires	3.1	Tire type, P = pneumatic, SE = solid pneu, C = cushion		P	P
	3.2	Tire size, front	in	7.00 x 12 - 14 ply rating	7.00 x 12 - 14 ply rating
	3.3	Tire size, rear	in	6.50 x 10 - 10 ply rating	6.50 x 10 - 10 ply rating
	3.5	Wheels, number front / rear (x = drive wheels)		2x / 2	2x / 2
	3.6	Tread, front	in(mm)	39.6 (1005)	39.6 (1005)
	3.7	Tread, rear	in(mm)	37.0 (940)	37.0 (940)
	Dimensions	4.1	Tilt of upright / fork carriage, back / forward	degrees	10 / 8
4.2		Height, upright lowered	in(mm)	85.2 (2165)	85.2 (2165)
4.3		Freelift	in(mm)	4.3 (110)	4.3 (110)
4.4		Lift height	in(mm)	130 (3300)	130 (3300)
4.5		Height, upright extended	in(mm)	178.5 (4533)	178.5 (4533)
4.7		Height overhead guard	in(mm)	83.9 (2130)	83.9 (2130)
4.8		Seat height	in(mm)	42.9 (1090)	42.9 (1090)
4.12		Coupling height	in(mm)	14.5 (368)	14.5 (368)
4.19		Overall length	in(mm)	142.9 (3630)	142.9 (3630)
4.20		Length to face of forks	in(mm)	100.8 (2560)	100.8 (2560)
4.21		Width	in(mm)	47.6 (1210)	47.6 (1210)
4.22		Fork dimensions	in(mm)	1.8 x 4 x 42 (45 x 100 x 1070)	1.8 x 4 x 42 (45 x 100 x 1070)
4.23		Fork carriage		Hook Type	Hook Type
4.24		Fork carriage width	in(mm)	41.0 (1041)	41.0 (1041)
4.31		Ground clearance minimum, loaded	in(mm)	5.3 (135)	5.3 (135)
4.32		Ground clearance center of wheelbase	in(mm)	6.9 (175)	6.9 (175)
4.34		Right Angle Stack (add load length and clearance)	in(mm)	109.6 (2783)	109.6 (2783)
4.35		Outside turning radius	in(mm)	91.8 (2331)	91.8 (2331)
4.36		Inside turning radius	in(mm)	8.0 (203)	8.0 (203)
Performance	5.1	Travel speed loaded / unloaded	mph (kph)	12.1 / 12.3 (19.5 / 19.8)	12.0 / 12.3 (19.4 / 19.8)
	5.2	Lift speed loaded / unloaded	fpm(ms)	108/114 (.55/.58)	106/114 (.54/.58)
	5.3	Lowering speed loaded / unloaded	fpm(ms)	91/85 (.46/.43)	91/85 (.46/.43)
	5.6	Max. drawbar pull loaded / unloaded	lbs(N)	4211 / 2185 (18731 / 9718)	4244 / 2167 (18878 / 9640)
	5.8	Max. gradeability loaded / unloaded	%	37.0 / 24.2	32.1 / 22.1
	5.10	Service brake		Hydraulic Drum and Shoe	Hydraulic Drum and Shoe
Drive Line	7.1	Manufacturer / Type		Yanmar 4TNE98	Yanmar 4TNE98
	7.2	Rated output per SAE J1349	HP/kW	58.6 / 43.6	58.6 / 43.6
	7.3	Rated speed	rpm	2300	2300
	7.4	No. of cylinders / displacement	#/cu. in. (Liters)	4 / 203 (3.3)	4 / 203 (3.3)
8.2	Operating pressure for attachments	psi/bar	Adjustable	Adjustable	
8.4	Sound level, driver's ear per ANSI B56.11.5	dB(A)	81	81	

Clark	Clark	Clark	Clark
CQ30D	CQ20L	CQ25L	CQ30L
Diesel	LPG	LPG	LPG
Driver Seated	Driver Seated	Driver Seated	Driver Seated
6000 (3000)	4000 (2000)	5000 (2500)	6000 (3000)
24 (600)	24 (600)	24 (600)	24 (600)
18.2 (462)	17.8 (452)	17.8 (452)	18.2 (462)
66.9 (1700)	63.8 (1620)	63.8 (1620)	66.9 (1700)
9202 (4174)	7725 (3504)	8232 (3734)	9114 (4134)
13,942 / 1669 (6417 / 757)	10,635 / 1521 (4824 / 690)	12,278 / 1466 (5569 / 665)	13,995 / 1733 (6348 / 786)
3779 / 5423 (1714 / 2460)	3642 / 4083 (1652 / 1852)	3536 / 4696 (1604 / 2130)	3624 / 5490 (1644 / 2490)
P	P	P	P
8.15 x 15 - 14 ply rating	7.00 x 12 - 14 ply rating	7.00 x 12 - 14 ply rating	8.15 x 15 - 14 ply rating
6.50 x 10 - 10 ply rating	6.50 x 10 - 10 ply rating	6.50 x 10 - 10 ply rating	6.50 x 10 - 10 ply rating
2x / 2	2x / 2	2x / 2	2x / 2
40.6 (1030)	39.6 (1005)	39.6 (1005)	40.6 (1030)
37.0 (940)	37.0 (940)	37.0 (940)	37.0 (940)
10 / 8	10 / 8	10 / 8	10 / 8
85.8 (2180)	85.2 (2165)	85.2 (2165)	85.8 (2180)
4.3 (110)	4.3 (110)	4.3 (110)	4.3 (110)
130 (3300)	130 (3300)	130 (3300)	130 (3300)
178.6 (4536)	178.5 (4533)	178.5 (4533)	178.6 (4536)
83.9 (2130)	83.9 (2130)	83.9 (2130)	83.9 (2130)
42.9 (1090)	42.9 (1090)	42.9 (1090)	42.9 (1090)
14.5 (368)	14.5 (368)	14.5 (368)	14.5 (368)
146.9 (3730)	142.9 (3630)	142.9 (3630)	146.9 (3730)
104.8 (2660)	100.8 (2560)	100.8 (2560)	104.8 (2660)
49.2 (1250)	47.6 (1210)	47.6 (1210)	49.2 (1250)
1.8 x 5 x 42 (40 x 122 x 1070)	1.8 x 4 x 42 (45 x 100 x 1070)	1.8 x 4 x 42 (45 x 100 x 1070)	1.8 x 5 x 42 (40 x 122 x 1070)
Hook Type	Hook Type	Hook Type	Hook Type
41.0 (1041)	41.0 (1041)	41.0 (1041)	41.0 (1041)
5.9 (150)	5.3 (135)	5.3 (135)	5.9 (150)
6.9 (175)	6.9 (175)	6.9 (175)	6.9 (175)
111.1 (2821)	109.6 (2783)	109.6 (2783)	111.1 (2821)
92.9 (2359)	91.8 (2331)	91.8 (2331)	92.9 (2359)
8.1 (205)	8.0 (203)	8.0 (203)	8.1 (205)
12.4 / 12.7 (20.0 / 20.5)	12.6 / 12.8 (20.2 / 20.6)	12.5 / 12.8 (20.1 / 20.6)	12.9 / 13.2 (20.8 / 21.3)
104/114 (.53/.58)	100/106 (.51/.54)	98/106 (.50/.54)	96/106 (.49/.54)
91/85 (.46/.43)	91/85 (.46/.43)	91/85 (.46/.43)	91/85 (.46/.43)
4019 / 2266 (17878 / 10081)	3889 / 2185 (17299 / 9718)	3909 / 2121 (17387 / 9434)	3695 / 2174 (16436 / 9669)
26.3 / 21.0	33.8 / 25.9	29.7 / 22.0	24.2 / 20.5
Hydraulic Drum and Shoe	Hydraulic Drum and Shoe	Hydraulic Drum and Shoe	Hydraulic Drum and Shoe
Yanmar 4TNE98	Mitsubishi 4G64	Mitsubishi 4G64	Mitsubishi 4G64
58.6 / 43.6	55 / 41	55 / 41	55 / 41
2300	2500	2500	2500
4 / 203 (3.3)	4 / 143 (2.3)	4 / 143 (2.3)	4 / 143 (2.3)
Adjustable	Adjustable	Adjustable	Adjustable
81	79	79	79



& Don't Forget... **Safety Starts With You!**

Before operating a lift truck, an operator must:

- Be trained and authorized
- Read and understand operator's manual
- Not operate a faulty lift truck
- Not repair a lift truck unless trained and authorized
- Have the overhead guard and load backrest extension in place
- Perform daily inspections

During operation, a lift truck operator must:

- Wear a seat belt
- Keep entire body inside truck cab
- Never carry passengers or lift people
- Keep truck away from people and obstructions
- Travel with lift mechanism as low as possible and tilted back
- Allow safe stopping distance and come to a complete stop before leaving operator compartment

To park a lift truck, an operator must:

- Completely lower forks or attachments
- Shift into neutral
- Turn key off
- Set parking brake

- We don't just build forklifts. As a company, we are also focused on providing our customers with the best possible technical service support and aftermarket parts available.
- Even though our business starts with a quality, cost-effective product, our organization understands that it is the support and services we provide after the sale that help keep your business running at peak efficiency.
- **THE CLARK PartsPRO® SYSTEM** is our industry-leading electronic parts and service documentation tool that provides dealers with a quick and accurate method of identifying parts for every CLARK forklift built since 1961. PartsPRO® ensures the availability of the most current technical information and has the unique capability to create parts manuals specific to your mixed CLARK fleet, making it simple to positively identify and order the correct part(s) from your local CLARK dealer. The right CLARK part — The First Time, Every Time.
- **UNRIVALED PARTS SUPPORT** Our Aftermarket Distribution Center provides parts to over 250 North American CLARK dealers and many international dealers. This CLARK operated 184,000 square foot facility is dedicated to supporting the CLARK models built over the last 90 years. This facility is focused on providing excellent off-the-shelf availability, quality parts, quick response time and competitive pricing.

DEPENDABLE PARTS = DEPENDABLE TRUCKS



BUILT TO LAST.®



CLARK MATERIAL HANDLING COMPANY

North American Headquarters
700 Enterprise Drive • Lexington, KY 40510
866-252-5275 • www.clarkmhc.com

CQ 20/25/30

59-894-0337 Printed in USA CR040810M

© 2008 CLARK Material Handling Company